

Power Relay RM 2/3/7

2 / 3 pole 10 / 16 A, DC- or AC-coil



- 2 C/O or 3 C/O contacts
- Switching capacity up to 6000 VA
- DC- or AC-coil
- Mechanical indicator
- Push-to-test-button
- Plug-in version, PCB terminals, chassis- or DIN-rail mount

Applications

Elevator control, power supplies



Technical data of approved types on request

F0163-A

Contact data	RM 2	RM 3	RM 7
Configuration	2 C/O	3 C/O	3 C/O
Type of contact	single contact		
Rated current	16 A	10 A	16 A
Rated voltage / max. breaking voltage AC	380 Vac / 440 Vac		
Maximum breaking capacity AC	6000 VA	3800 VA	6000 VA
Make current	40 A	40 A	40 A
Contact material	AgCdO		

Contact life

Type	Load	Standard
RM2	1hp, 240 Vac, per contact	UL 508
RM7	1.5hp, 240 Vac, 3-phase	UL 508
RM7	15 A, 250 Vac, per contact	UL 508
RM3	1 / 2hp, 240 Vac, per contact	UL 508
RM3	10 A, 240 Vac, per contact	UL 508

Coil data	RM 2	RM 3	RM 7
Nominal voltage	DC coil	6...220 Vdc	
	AC coil	6...400 Vac	
Nominal coil power	DC coil	1.2 W	1.6 W
	AC coil	2.3 VA	2.8 VA

Coil versions, DC-coil, RM2, RM3

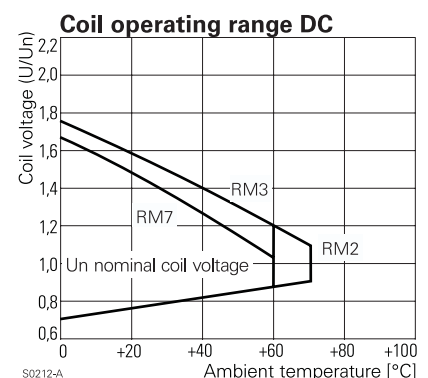
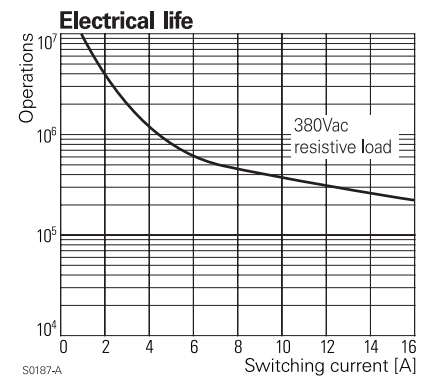
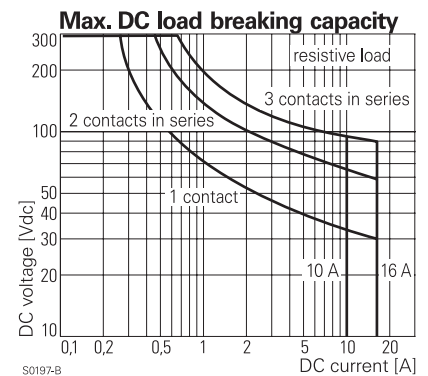
Coil code	STD	LED	PD*	LED PD*	Nominal voltage Vdc	Pull-in voltage Vdc	Release voltage Vdc	Coil resistance Ω	Coil current mA
006	L06	0A6	LA6		6	4.5	0.6	32 \pm 10%	187.5
012	L12	0B2	LB2		12	9.0	1.2	110 \pm 10%	109.1
024	L24	0C4	LC4		24	18.0	2.4	475\pm10%	50.5
048	L48	0E8	LE8		48	36.0	4.8	2000 \pm 10%	24.0
060	L60	0G0	LG0		60	45.0	6.0	2850 \pm 10%	21.1
110	M10	1B0	MB0		110	82.5	11.0	10000 \pm 12%	11.0
221	N21	2C1	NC1		220	165.0	22.0	40000 \pm 15%	5.5

Coil versions, DC-coil, RM7

006	L06	0A6	LA6	6	4.5	0.6	24 \pm 10%	250.0
012	L12	0B2	LB2	12	9.0	1.2	86 \pm 10%	139.5
024	L24	0C4	LC4	24	18.0	2.4	345\pm10%	69.6
048	L48	0E8	LE8	48	36.0	4.8	1340 \pm 10%	35.8
060	L60	0G0	LG0	60	45.0	6.0	2200 \pm 10%	27.3
110	M10	1B0	MB0	110	82.5	11.0	7300 \pm 10%	15.1
221	N21	2C1	NC1	220	165.0	22.0	30000 \pm 15%	7.3

All figures are given for coil without preenergization, at ambient temperature +20°C

* Protection diode PD; standard polarity: +A1 / -A2



Power Relay RM 2/3/7

2 / 3 pole 10 / 16 A, DC- or AC-coil

Coil versions, AC-coil, RM2, RM3

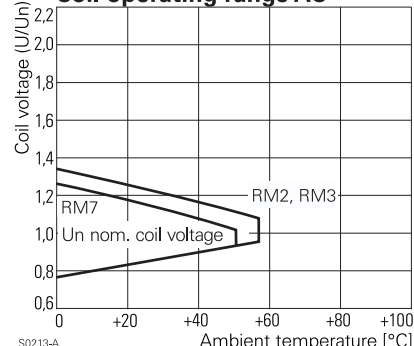
Coil code	LED	Nominal voltage Vac	Pull-in voltage Vac	Release voltage Vac	Coil resistance Ω	Coil current mA
506	R06	6	4.8	2.4	$5.3 \pm 10\%$	381.7
512	R12	12	9.6	4.8	$24 \pm 10\%$	182.5
524	R24	24	19.2	9.6	$86 \pm 10\%$	94.2
548	R48	48	38.4	19.2	$345 \pm 10\%$	47.5
560	R60	60	48.0	24.0	$544 \pm 10\%$	37.8
615	S15	115	92.0	46.0	$2000 \pm 10\%$	20.6
730	T30	230	184.0	92.0	$8300 \pm 12\%$	10.1
900	V00	400	320.0	160.0	$27500 \pm 15\%$	5.8

Coil versions, AC-coil, RM7

506	R06	6	4.8	2.4	$4.7 \pm 10\%$	476.7
512	R12	12	9.6	4.8	$19.5 \pm 10\%$	225.8
524	R24	24	19.2	9.6	$80 \pm 10\%$	109.2
548	R48	48	38.4	19.2	$320 \pm 10\%$	54.2
560	R60	60	48.0	24.0	$500 \pm 10\%$	43.7
615	S15	115	92.0	46.0	$1850 \pm 10\%$	23.0
730	T30	230	184.0	92.0	$7500 \pm 10\%$	11.7
900	V00	400	320.0	160.0	$23500 \pm 15\%$	6.5

All figures are given for coil without preenergization, at ambient temperature +20°C

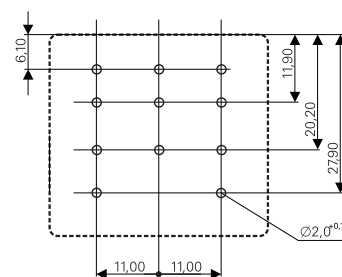
Coil operating range AC



S0213-A

PCB layout / terminal assignment

View on solder pins
Dimensions in mm

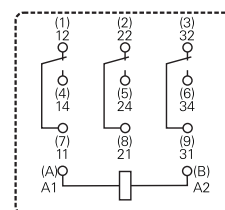


S0269-AA

Insulation

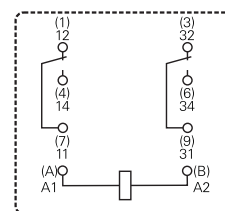
Dielectric strength	coil-contacts	2500 V _{rms}
	open contact circuit	1500 V _{rms}
	adjacent contacts	2500 V _{rms}
Clearance / creepage		≥ 3.5 / 6 mm
Insulation to VDE 0110b (2/79)		
	Insulation category / reference voltage	C / 400 with fully isolated Faston connectors

3 C/O contacts



S0269-AB

2 C/O contacts



S0269-AD

Other data

		RM 2	RM 3	RM 7
Ambient temperature	DC-coil	-45...+70 °C	-45...+60 °C	-45...+60 °C
	AC-coil	-45...+55 °C	-45...+55 °C	-45...+50 °C
Mechanical life		>20x10 ⁶ operations		
Max. switching rate at rated- / minimum load		16 min ⁻¹ / 100 min ⁻¹		
Operate- / release time		approx. 15 / 10 ms		
Bounce time		approx. 3 ms		
Vibration resistance N/O / N/C contact		>5 / 2 g	>5 / 2 g	>12 / 4 g
Relay weight		81 g		
Packaging unit		10 / 25 pcs.		
Accessories		see accessories RM		

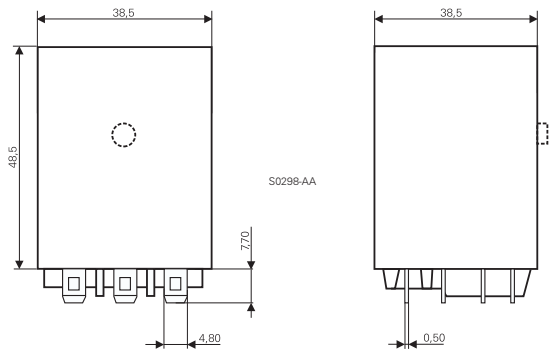
Power Relay RM 2/3/7

2 / 3 pole 10 / 16 A, DC- or AC-coil

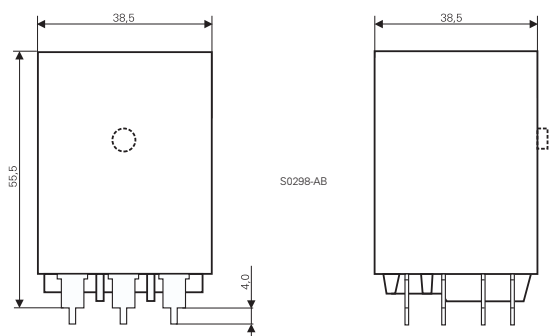
Dimensions

Dimensions in mm

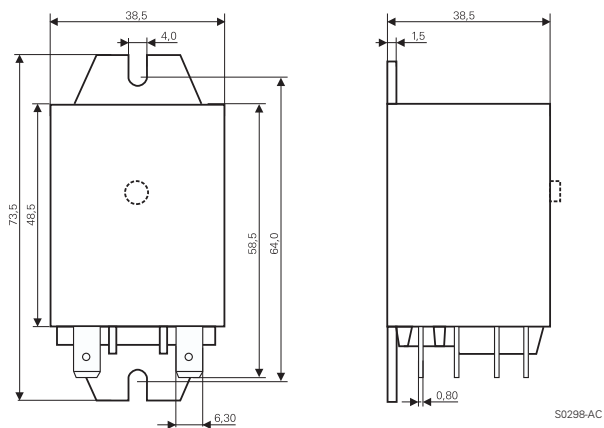
Plain cover, plug-in version



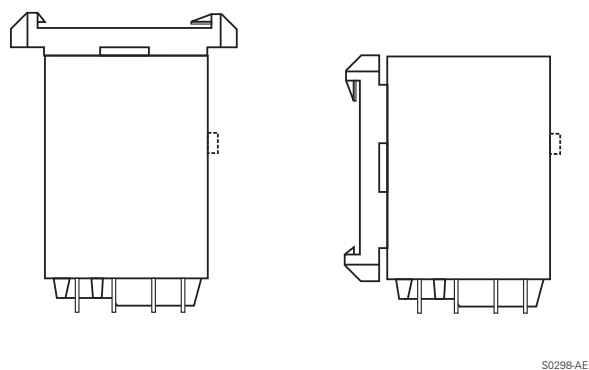
PCB version



Cover with mounting brackets, FASTON 250 (187 available)



Cover with DIN-snap-on attachment (FASTON 250 only)
horizontal vertical



Ordering key

Type	RM					
Contacts						
2 2 C/O contacts, 16 A						
3 3 C/O contacts, 10 A						
Version						
0 without test button						
3 with test button						
Enclosure						
2 plain cover, AMP-Faston 187						
3 cover with mounting brackets, AMP-Faston 187						
5 cover with mounting brackets, AMP-Faston 250						
7 PCB version						
8 cover with DIN-snap-on attachment, horizontal, AMP-Faston 250						
9 cover with DIN-snap-on attachment, vertical, AMP-Faston 250						
Coil						
Coil code: please refer to coil versions table, preferred types in bold print						
AMP-Faston 187 = 4.8 x 0.5 mm AMP-Faston 250 = 6.3 x 0.8 mm						

Rights to change data / design reserved