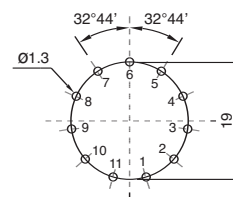
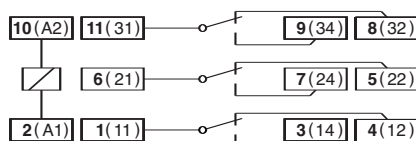


S3-L	S3-PO
11 pin, solder and printed circuit tags	

S3-L Flange panel mountable.

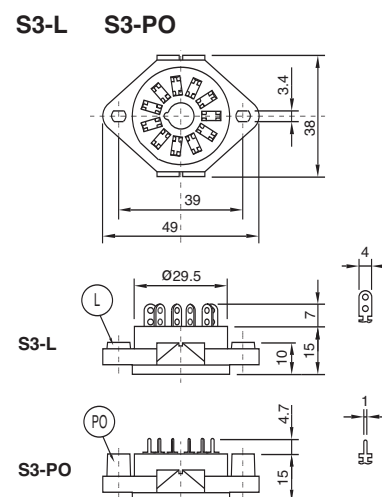
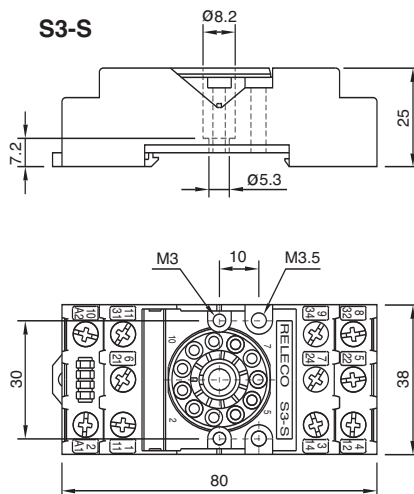
S3-PO Printed circuit tags with flange.

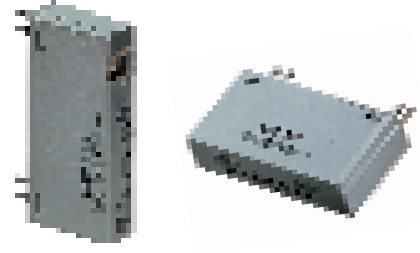
Printed circuit lay-out



Specifications

Nominal load	10 A / 250 V
Dielectric strength (adjacent pin)	2,5 KV
Hard brass, tin-plated terminals	

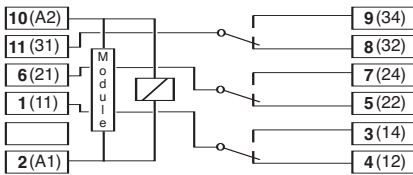




S3-MP One level, screws in line Logic wiring and Modules

Accepts the plug-in modules **M3P** in parallel with the relay coil.
Integrated hold-down clip and removable marking label. DIN rail or panel mountable. EN/DIN and sequential numbering.

Wiring diagram



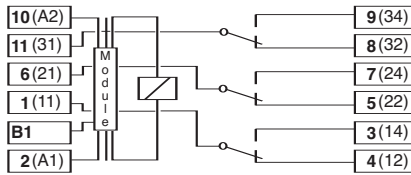
Specifications

Nominal load	10 A / 250 V
Dielectric strength (adjacent screws)	2,5 kV
Dielectric strength (screws / rail)	2,5 kV
Max. screw torque	1,2 Nm
Screw dimensions	M3, Pozi
Wire in-lets capacity:	
Solid wire	4 mm ² or 2 x 2,25 mm ²
Multi-core	22 - 14 AWG

S3-MS One level, screws in line Logic wiring and Modules

Accepts the plug-in modules **M3S** in series with the coil and **M3P** in parallel.
Integrated hold-down clip and removable marking label. DIN rail or panel mountable. EN/DIN and sequential numbering.

Wiring diagram



Specifications

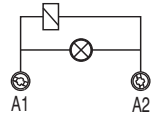
Nominal load	10 A / 250 V
Dielectric strength (adjacent screws)	2,5 kV
Dielectric strength (screws / rail)	2,5 kV
Max. screw torque	1,2 Nm
Screw dimensions	M3, Pozi
Wire in-lets capacity:	
Solid wire	4 mm ² or 2 x 2,25 mm ²
Multi-core	22 - 14 AWG

M3P Plug in modules for S3-MP

In parallel with the coil

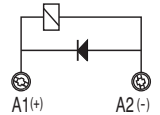
Signaling LED

M3P-X / 24 Vac/dc
M3P-X / 48 Vac/dc
M3P-X / 110 ... 125 Vac/dc
M3P-X / 200 ... 230 Vac/dc



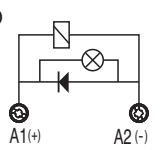
Free wheeling diode

M3P-DL / 12 ... 60 Vdc
M3P-DH / 12 ... 250 Vdc



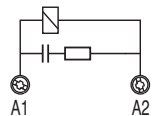
Free wheeling diode and LED

M3P-DX / 24 Vdc
M3P-DX / 48 Vdc
M3P-DX / 110 ... 125 Vdc
M3P-DX / 200 ... 230 Vdc



RC suppressor
(LED not available)

M3P-RC / 20 ... 50 Vac
M3P-RC / 110 ... 120 Vac
M3P-RC / 220 ... 240 Vac

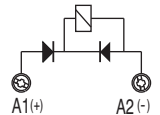


M3S Plug in modules for S3-MS

In series with the coil

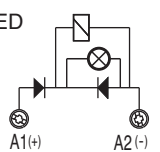
Free wheeling and polarity

M3S-FL / 12 ... 60 Vdc
M3S-FH / 12 ... 250 Vdc



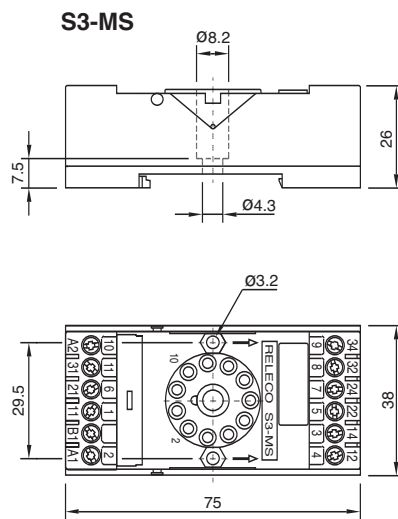
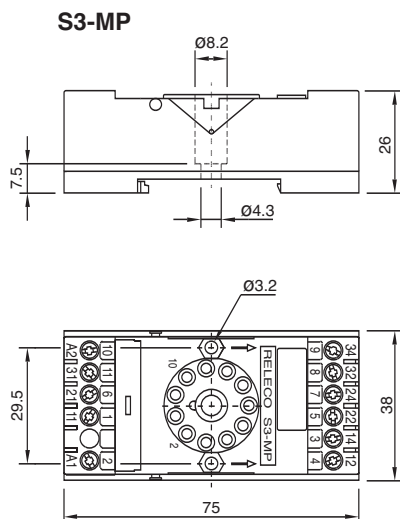
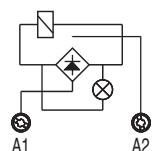
Free wheeling, polarity and LED

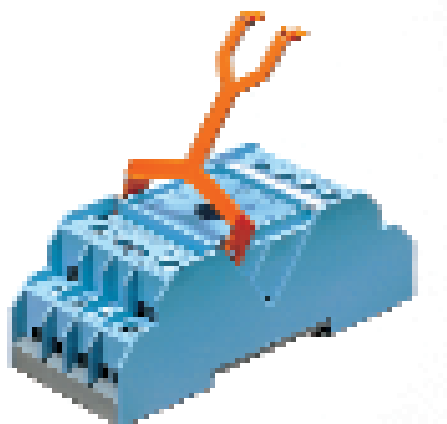
M3S-FX / 24 Vdc
M3S-FX / 48 Vdc
M3S-FX / 110 ... 125 Vdc
M3S-FX / 200 ... 230 Vdc



Rectifier bridge and LED

M3S-B / 12 ... 48 Vac/dc
M3S-BX / 12 Vac/dc
M3S-BX / 24 Vac/dc
M3S-BX / 48 Vac/dc



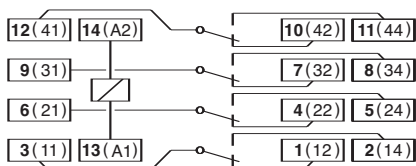


S4-B

Two level screws
Logic wiring

Integrated hold-down clip and removable marking label. DIN rail or panel mountable. EN/DIN and sequential numbering. According to EN60947

Wiring diagram



Specifications

Nominal load 10 A / 250 V
Dielectric strength (adjacent screws) 2,5 KV
Dielectric strength (screws / rail) 2,5 KV
Max. screw torque 1,2 Nm
Screw dimensions M3, Pozi
Wire in-lets capacity:
Solid wire 4 mm² or 2 x 2,25 mm²
Multi-core 22 - 14 AWG

Lloyd's (N) (S) (FI)

S4-L

S4-P

S4-PO

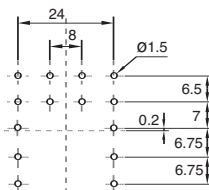
14 pin, solder and printed circuit tags

S4-L Flange panel mountable.

S4-P Printed circuit tags.

S4-PO Printed circuit tags with flange.

Printed circuit lay-out



Specifications

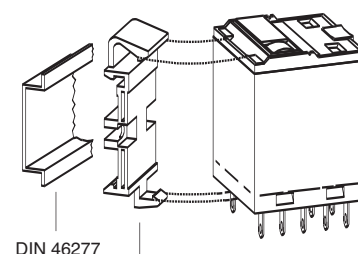
Nominal load 10 A / 250 V
Dielectric strength (adjacent pins) 2,5 KV
Hard brass tin-plated terminals

S4-R

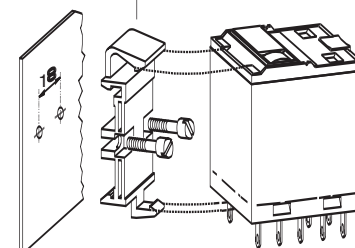
S5-R

S4-4

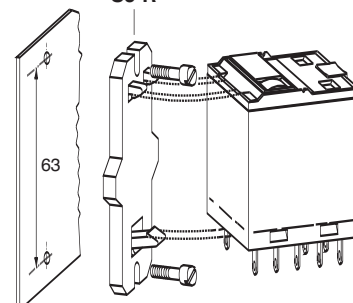
Mounting accessories



S4-R

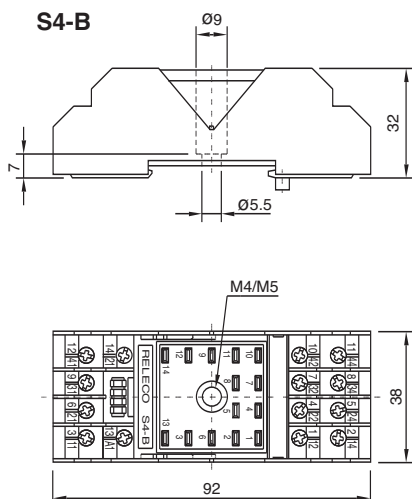


S5-R



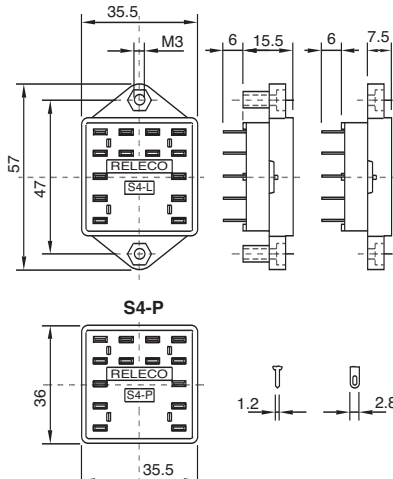
S4-4

S4-B

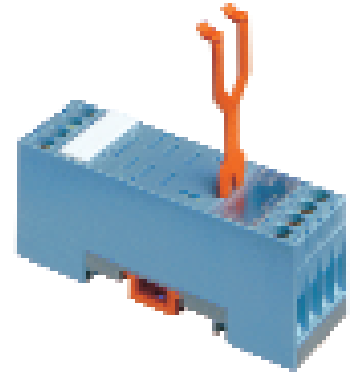


S4-PO

S4-L



S4-P

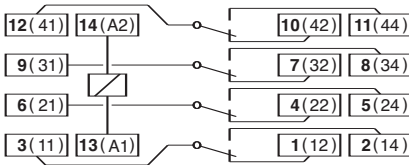


S5-S

Two level screws
Logic wiring

Integrated hold-down clip and removable marking label. DIN rail or panel mountable. EN/DIN and sequential numbering. According to EN60947

Wiring diagram



Specifications

Nominal load 16 A / 400 V
Dielectric strength (adjacent screws) 2,5 KV
Dielectric strength (screws / rail) 2,5 KV
Max. screw torque 1,2 Nm
Screw dimensions M3, Pozi
Wire in-lets capacity:
Solid wire 4 mm² or 2 x 2,25 mm²
Multi-core 22 - 14 AWG



S5-L

S5-P

S5-PO

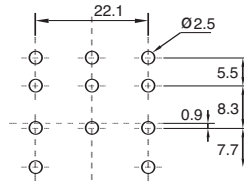
Solder and printed circuit tags

S5-L Flange panel mountable.

S5-P Printed circuit tags.

S5-PO Printed circuit tags with flange.

Printed circuit lay-out



Specifications

Nominal load 16 A / 400 V
Dielectric strength (adjacent screws) 2,5 KV
Hard brass tin-plated terminals

S7-M

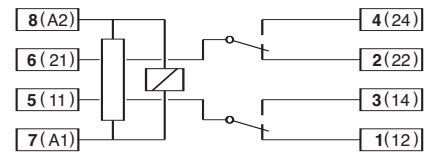
One level, screws on line

S7-16

22,5 mm wide

Socket offers an optimum packing density and is provided with sturdy screws terminals. DIN rail or panel mountable. Integrated clip. Removable marking label EN/DIN and sequential numbering.

Wiring diagram

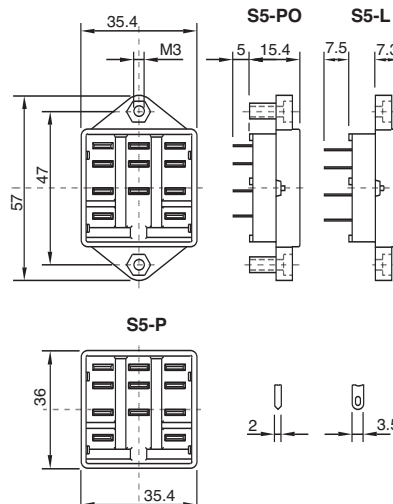
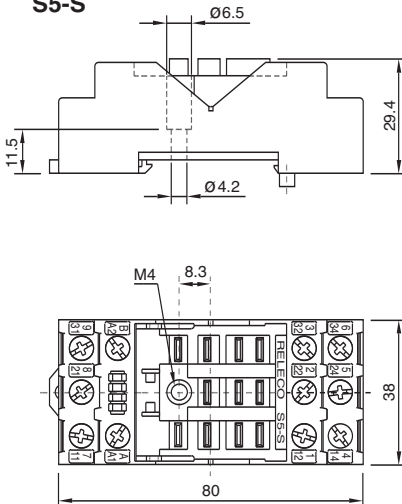


Specifications

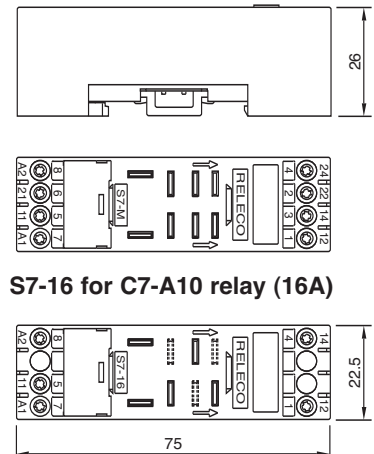
Nominal load S7-M 10 A / 250 V
Nominal load S7-16 16 A / 250 V
Dielectric strength (adjacent screws) 2,5 KV
Dielectric strength (screws / rail) 2,5 KV
Max. screw torque 1,2 Nm
Screw dimensions M3, Pozi
Wire in-lets capacity:
Solid wire 4 mm² or 2 x 2,25 mm²
Multi-core 22 - 14 AWG

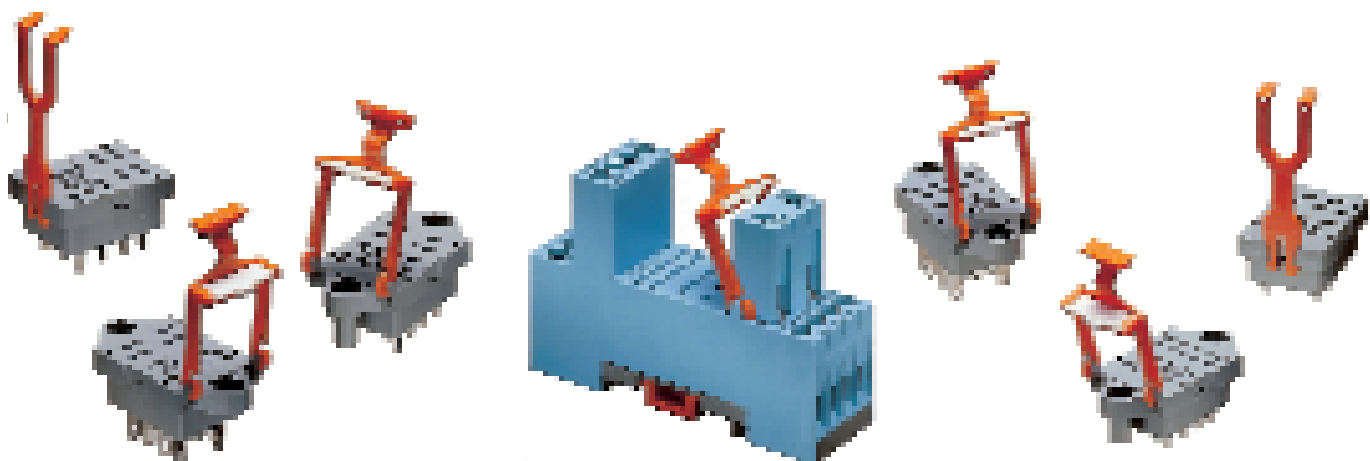


S5-S



S7-M





S7-L S7-P S7-PO

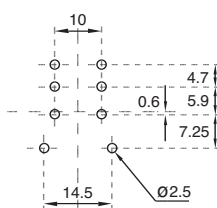
Solder and printed circuit tags

S7-L Flange panel mountable.

S7-P Printed circuit tags.

S7-PO Printed circuit tags with flange.

Printed circuit lay-out



Specifications

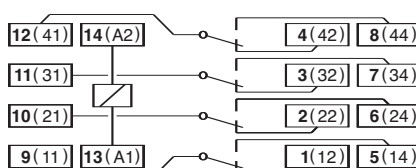
Nominal load 10 A / 250 V
Dielectric strength (adjacent screws) 2,5 KV
Hard brass tin-plated terminals

S9-M Two level, screws in line

22,5 mm wide

Socket offers an optimum packing density and is provided with sturdy screws terminals. DIN rail or panel mountable. Integrated clip. Removable marking label. EN/DIN and sequential numbering.

Wiring diagram



Specifications

Nominal load 6 A / 250 V
Dielectric strength (adjacent screws) 2,5 KV
Dielectric strength (screws / rail) 2,5 KV
Max. screw torque 1,2 Nm
Screw dimensions M3, Pozi
Wire in-lets capacity:
Solid wire 4 mm² or 2 x 2,25 mm²
Multi-core 22 - 14 AWG

S9-L S9-P S9-PO

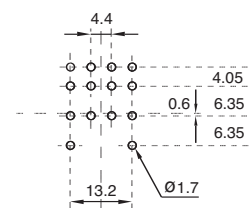
Solder and printed circuit tags

S9-L Flange panel mountable.

S9-P Printed circuit tags.

S9-PO Printed circuit tags with flange.

Printed circuit lay-out



Specifications

Nominal load 6 A / 250 V
Dielectric strength (adjacent screws) 2,5 KV
Hard brass tin-plated terminals

Lloyd's



Lloyd's

